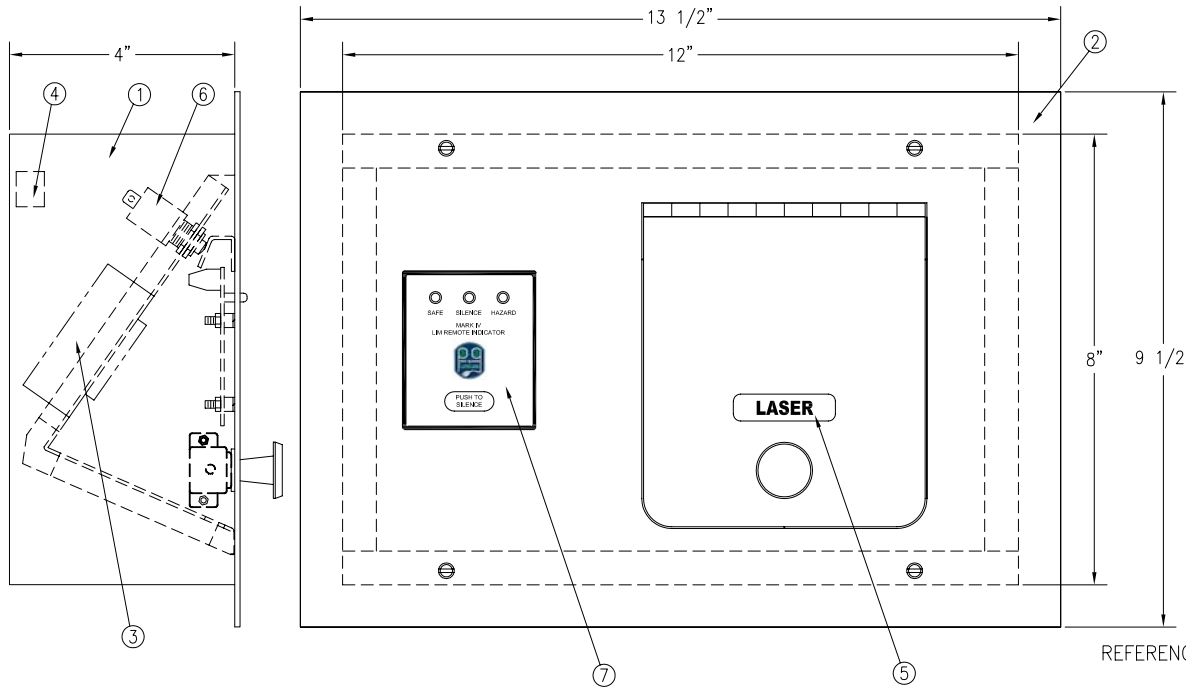


# PARTS LIST

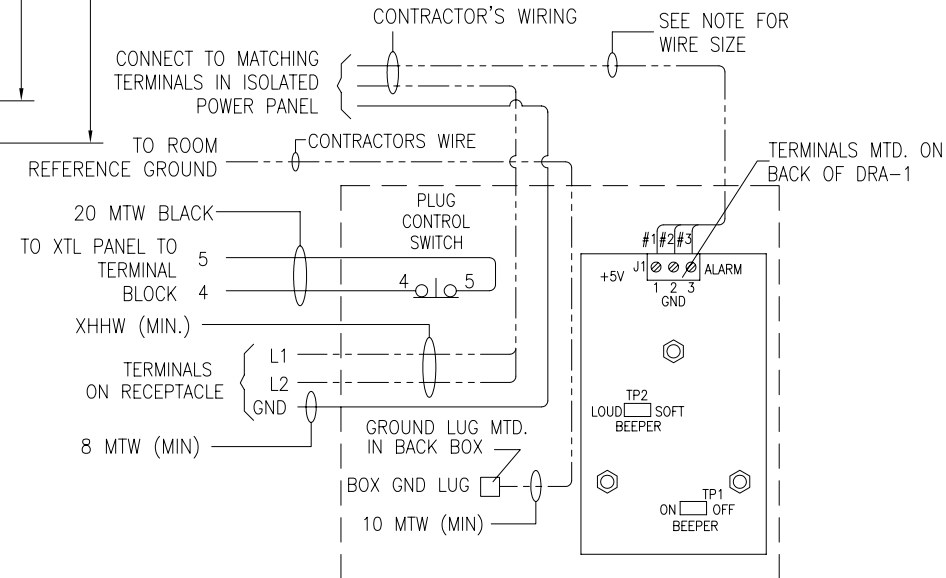
1. GALVANIZED BOX-CONDUIT ENTRY IN TOP ONLY, 418-206-684
2. STAINLESS STEEL COVER
3. LASER RECEPTACLE -
4. GROUND LUG
5. LABEL - LASER
6. PLUG CONTROL SWITCH
7. DIGITAL REMOTE ANNUNCIATOR, DRA-1



SIDE VIEW

FRONT VIEW

TOTAL REQUIRED \_\_\_\_\_



WIRING DIAGRAM

# REFERENCE ONLY

FOR:	ACAD STD.: RLOR08001.dwg	S.O. NUM.:
STD. B.O.M.:	<b>POST GLOVER LIFELINK</b> 167 GAP WAY ERLANGER, KY U.S.A. 41018 (859) 283-5900 COPYRIGHT © 2008	TITLE/DESCRIPTION: LASER OUTLET WITH DRA-1 LIM SIGNAL AND PLUG CONTROL TYPE: RLO-R
	<small>THIS DOCUMENT AND THE INFORMATION IT CONTAINS ARE THE PROPERTY OF POST GLOVER LIFELINK. IT IS DISCLOSED FOR THE PURPOSE FOR WHICH IT IS FURNISHED AND SHALL NOT BE DUPLICATED OR DISTRIBUTED.</small>	DFTR: JJM    DATE: 02/28/08    DWG. NO.: <b>RLOR08001</b> REV.: 00

**NOTE:**

1) WHEN WIRING REMOTES BACK TO ISOLATION PANEL USE #18 GAGE TFFN WIRE FOR LENGTHS UP TO 50'. IF WIRE LENGTHS EXCEED 50', BUT ARE NO GREATER THAN 100' USE #14 GAGE TFFN. WIRING MUST BE CSA APPROVED 300 VOLT.